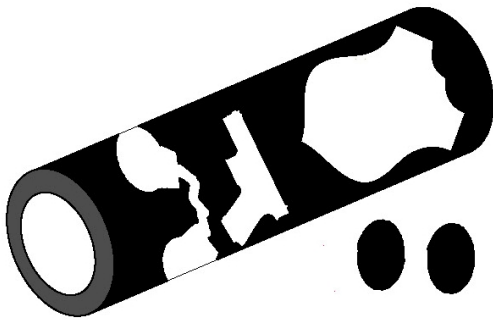


## Police Laser Inlay Kits - Assembly Instructions

Please do all of the assembly on a clean sheet of paper, so if something drops, you won't lose it.

### Kit Components

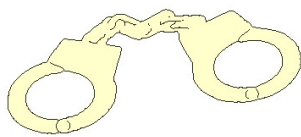
1. 1 x Black Stabilized Barrel with Laser Cutout (Barrel has 3 pieces)
2. 1 x Yellow Stabilized Wood Police Badge Inlay
3. 1 x Light Brown Glock Pistol Inlay Piece
4. 1 x White Stabilized Holly Handcuff Inlay Piece
5. 3 x Small Black Inlay Pieces for the Trigger Guard (Only 1 is needed)



Barrel with Laser Cutout and Pieces



Police Badge Inlay Piece



Handcuff Laser Inlay



Glock Laser Inlay



Small Black Inlay Pieces

### Step 1

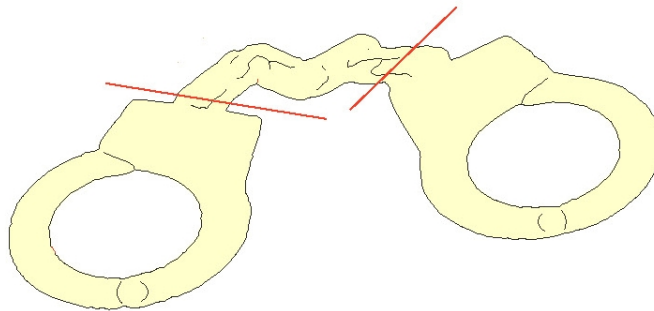
Remove all components from the plastic bag and place on a clean work surface. Please note that the components are small and you can lose them quite easily. The parts are also fragile and should be handled with care. Do not throw anything away until the kit is completely assembled.

### Step 2

Take the barrel with the laser cutout and slide the brass tube (27/64) into it. Please **do not use any glue** at this stage. This is only to assist you with the assembly process.

### Step 3

Take the black barrel and remove all the pieces from it (some pieces may have fallen out already). Take the Handcuff Laser Inlay and break it into 3 pieces (see illustration below). The piece is very fragile, so please be careful when breaking it apart.



**Break the Laser Cutout on the Red Lines**

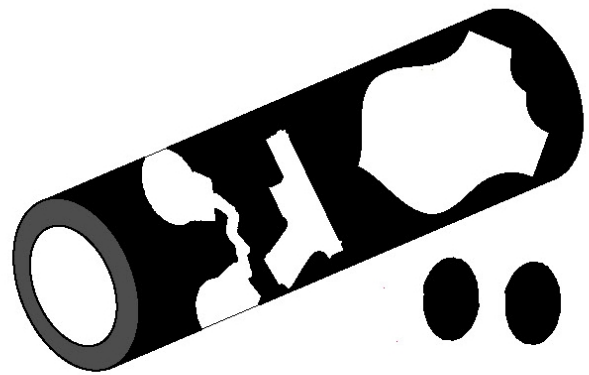
## Step 4

Place all of the small inlay pieces into their corresponding openings. Some of these pieces are very tiny. **DO NOT RUSH and LOSE THEM!**

Assemble the pieces in the following order:

1. Insert the Glock Pistol,
2. Insert the Police Badge,
3. Insert the Handcuffs,
4. Insert the small black piece into the trigger guard and handcuffs.

Some pieces might be more difficult to fit and you can dip them in warm water before placing it. Never force anything into place.



Barrel with Laser Cutout and Pieces

Once all of the parts are in place, you can use a small piece of wood / pen blank to push it completely into position.

## Step 5

After all the inlay pieces are in place **REMOVE THE BRASS TUBE** from the barrel and then use small amounts of thin CA glue to secure all the pieces into place. Please **do not** soak the whole inlay with thin CA. Try to keep the CA glue to the outer edges of each inlay piece and not in the laser detail lines which will be filled with black dust while turning and finishing the pen.



## Step 6

Cut the barrel to length, but **do not use a Barrel Trimmer**. It will break the barrel and destroy all of your hard work. Use a disk sander or any other method that will not destroy your blank. Now you can glue the brass tube into place with a glue of your choice. Please let the glue dry completely before turning the blank.

It is important to sand the barrel smooth before you use a skew or any other turning tools.

After the barrel is sanded smooth, blow the sanding dust out of the laser detail lines and rub some black / dark wood dust into them. Use thin CA glue over the whole inlay to secure all pieces into place before turning the barrel to size.

While turning the barrel to size, you will notice that some of the laser detail lines will need some more dust filling. Just keep filling the detail lines with dust and cover with thin CA and continue turning.

If you have any questions or problems, feel free to contact me at your convenience.