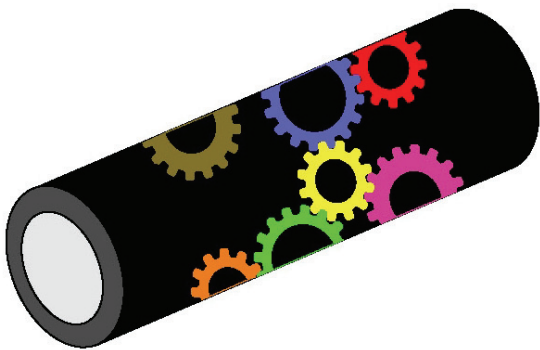


Interlocking Gear Laser Inlay Kits - Assembly Instructions

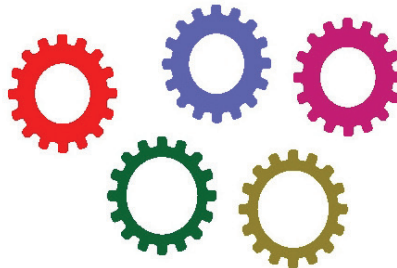
Please do all of the assembly on a clean sheet of paper, so if something drops, you won't lose it.

Kit Components

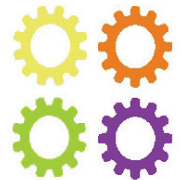
1. 14 x Stabilized Black laser cut pieces
2. 5 x Big Stabilized Dyed Maple laser cut Gears
3. 4 x Small Stabilized Dyed Maple laser cut Gears
4. 9 x Black Stabilized inserts for Gears



Barrel with laser cutout



Big gears



Small Gears

Step 1

Remove all components from the plastic bag and place on a clean work surface. Try to put the pieces in the order that they are numbered.

Please note that the components are small and you can lose them quite easily. The parts are also fragile and should be handled with care.

Step 2

Take the brass tube (27/64) and place the largest black piece onto it. **Please do not use any glue.**

Now use a small piece of painters masking tape (green or blue) to tape the first black inlay piece onto the brass tube. Look at the Gear layout diagram on page 5 and figure out where you are in relation to the inlay pieces and place the next piece that will fit onto/into the first piece.

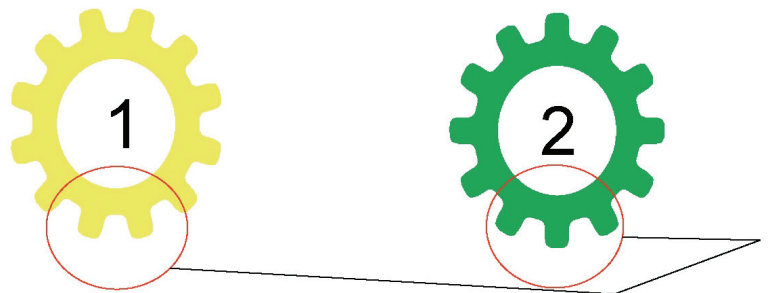
There is no specific order in which the inlay kit will go together, just keep building from the piece you have chosen to be the starting piece.

Step 3

The big gears are all the same size and will fit anywhere. As you are progressing in the assembly process, use more masking tape to keep all the parts from falling off the brass tube.

When placing the small gears, you have to use the correct gear type. There are two types of small gears. Please study them before trying to force them into place. Also make sure you have the orientation of the gears correct before placing them.

Please look at the difference in the two gears. **Gear 1** has **two teeth point down** and **Gear 2** has **one tooth pointing down**.



When placing these small gears, it is important to select the right gear type for the opening.

Be sure to look at the diagram on page 5 to see which gear is appropriate.



Step 4

Use small strips of masking tape to hold the inlay pieces together throughout the assembly process. When you get to the last few pieces, you must remove some of the masking tape that was holding the very first pieces in place.

The very last few pieces will be a little more difficult to get into place, but be very gentle when pushing on them. It might help to loosen the tape a little on some of the adjacent inlay pieces to make some more room to wiggle them into place. With the brass tube still inside the assembly and the whole piece complete, wrap it tight with the masking tape to make sure it will not fall apart when you remove the brass tube.

Step 5

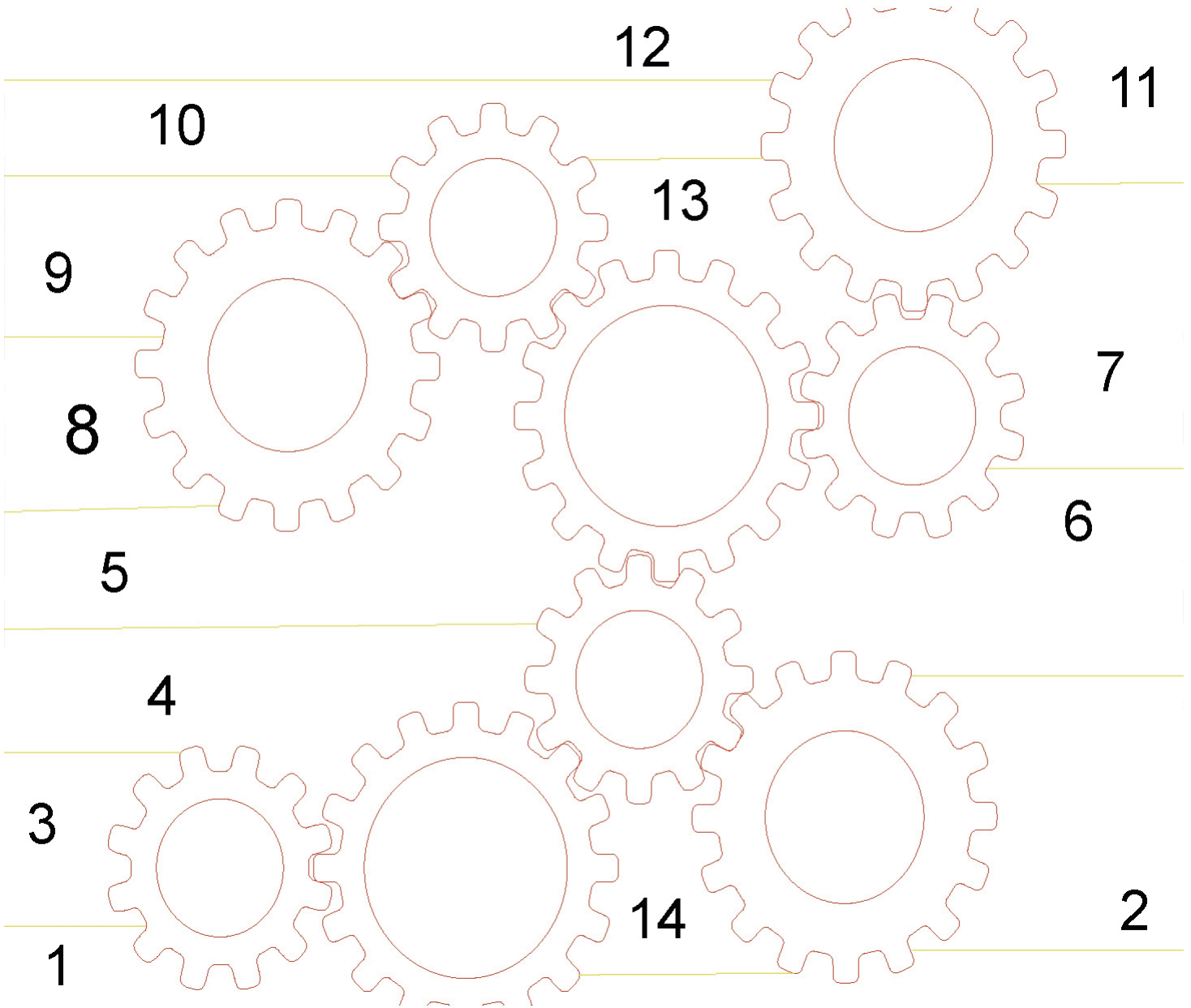
After all of the inlay pieces are in place, **remove the brass tube** from the barrel and then use small amounts of thin CA glue to secure all the pieces into place. Please **do not** soak the whole inlay with thin CA, but pour thin CA glue into the barrel and make sure all pieces are covered.

Let the glue cure before proceeding to turn the barrel. **Do not** use accelerator to spray inside the barrel. It will form high spots and it will be difficult to fit the brass tube.

Step 6

Cut the barrel to length, but **do not** use a Barrel Trimmer. It will destroy/break the barrel and all of your hard work. Use a disk sander or any other method that will not destroy your blank.

Now you can glue the brass tube into place with a glue of your choice. Let it dry completely before turning the blank. It is important to sand the barrel smooth before you use a skew or any other turning tools.



If you have any problems, feel free to contact me at your convenience.